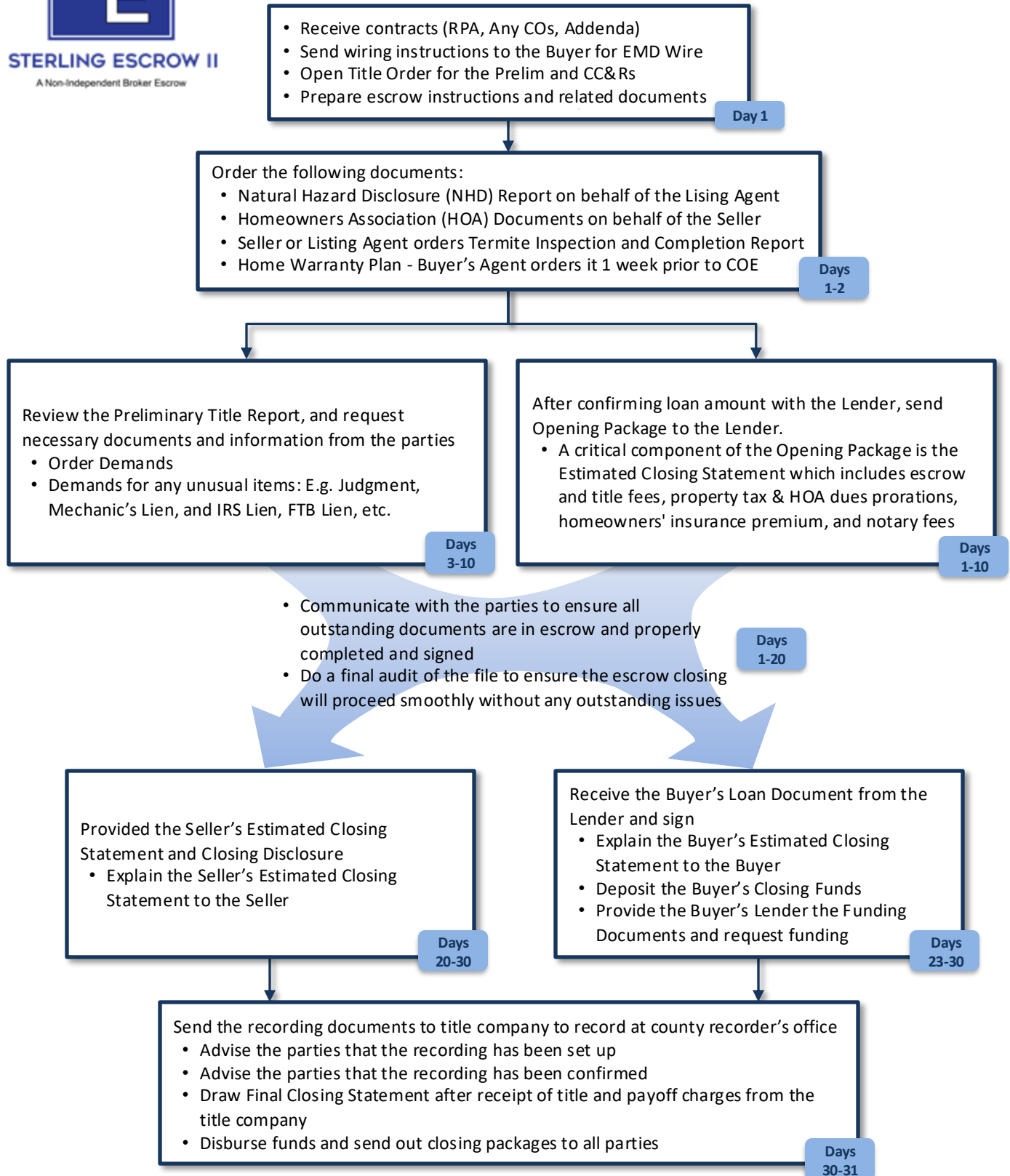




**STERLING ESCROW II**  
A Non-Independent Broker Escrow

# Sterling Escrow II

## Escrow Procedures Overview



**Sterling Escrow II**  
**Michelle Kim, Escrow Officer/Manager**  
**Phone (949) 262-7200 Fax (949) 552-6533**  
**michelle@sterlingescrow.org**  
**3500 Barranca Parkway, Suite 100, Irvine, CA 92606**